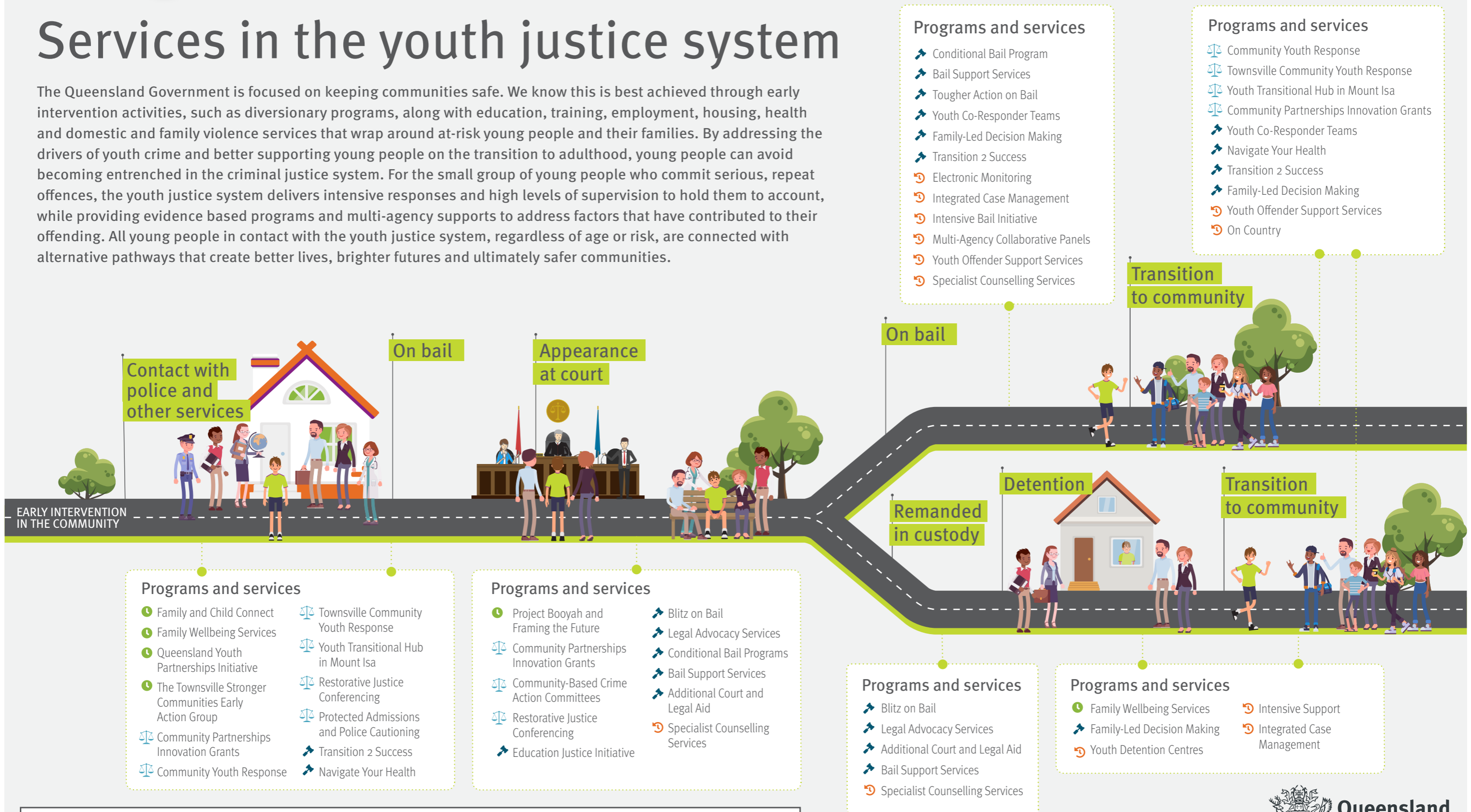


Services in the youth justice system

The Queensland Government is focused on keeping communities safe. We know this is best achieved through early intervention activities, such as diversionary programs, along with education, training, employment, housing, health and domestic and family violence services that wrap around at-risk young people and their families. By addressing the drivers of youth crime and better supporting young people on the transition to adulthood, young people can avoid becoming entrenched in the criminal justice system. For the small group of young people who commit serious, repeat offences, the youth justice system delivers intensive responses and high levels of supervision to hold them to account, while providing evidence based programs and multi-agency supports to address factors that have contributed to their offending. All young people in contact with the youth justice system, regardless of age or risk, are connected with alternative pathways that create better lives, brighter futures and ultimately safer communities.



- Programs and services**
- Conditional Bail Program
 - Bail Support Services
 - Tougher Action on Bail
 - Youth Co-Responder Teams
 - Family-Led Decision Making
 - Transition 2 Success
 - 🕒 Electronic Monitoring
 - 🕒 Integrated Case Management
 - 🕒 Intensive Bail Initiative
 - 🕒 Multi-Agency Collaborative Panels
 - 🕒 Youth Offender Support Services
 - 🕒 Specialist Counselling Services

- Programs and services**
- ⚖️ Community Youth Response
 - ⚖️ Townsville Community Youth Response
 - ⚖️ Youth Transitional Hub in Mount Isa
 - ⚖️ Community Partnerships Innovation Grants
 - Youth Co-Responder Teams
 - Navigate Your Health
 - Transition 2 Success
 - Family-Led Decision Making
 - 🕒 Youth Offender Support Services
 - 🕒 On Country

- Programs and services**
- 🕒 Family and Child Connect
 - 🕒 Family Wellbeing Services
 - 🕒 Queensland Youth Partnerships Initiative
 - 🕒 The Townsville Stronger Communities Early Action Group
 - ⚖️ Community Partnerships Innovation Grants
 - ⚖️ Community Youth Response
 - ⚖️ Townsville Community Youth Response
 - ⚖️ Youth Transitional Hub in Mount Isa
 - ⚖️ Restorative Justice Conferencing
 - ⚖️ Protected Admissions and Police Cautioning
 - Transition 2 Success
 - Navigate Your Health

- Programs and services**
- 🕒 Project Booyah and Framing the Future
 - ⚖️ Community Partnerships Innovation Grants
 - ⚖️ Community-Based Crime Action Committees
 - ⚖️ Restorative Justice Conferencing
 - Education Justice Initiative
 - Blitz on Bail
 - Legal Advocacy Services
 - Conditional Bail Programs
 - Bail Support Services
 - Additional Court and Legal Aid
 - 🕒 Specialist Counselling Services

- Programs and services**
- Blitz on Bail
 - Legal Advocacy Services
 - Additional Court and Legal Aid
 - Bail Support Services
 - 🕒 Specialist Counselling Services

- Programs and services**
- 🕒 Family Wellbeing Services
 - Family-Led Decision Making
 - 🕒 Youth Detention Centres
 - 🕒 Intensive Support
 - 🕒 Integrated Case Management



Youth justice programs and services



Intervene early: increase cross-agency collaboration to intervene early

Family and Child Connect and Intensive Family Support provide information, advice and referrals to vulnerable families, assessing needs and connecting to local services that best meet their needs. Intensive Family Support services are consent-based and provide case management services to vulnerable families with children and young people (unborn to 18) at risk of involvement in the statutory child protection system.

Aboriginal and Torres Strait Islander Family Wellbeing Services provide culturally responsive, community-led support to First Nations young people and their families each year, including access to Indigenous Youth and Family Workers to work with young people at risk of entering the youth justice system.

Project Booyah is a Queensland Police youth mentoring program that uses adventure-based learning, leadership skills, decision-making/problem-solving exercises, resilience training and family-inclusive principles to help young people aged 14–17 years make better life choices. **Framing the Future** provides post-program mentoring and support to Project Booyah graduates.

Queensland Youth Partnerships Initiative is a partnership with the retail sector to prevent crime and improve the relationship between young people and the community.

The **Townsville Stronger Communities Early Action Group** is made up of senior representatives of key government agencies. The group provides an integrated, whole-of-government response to youth crime issues in Townsville and coordinates services for young people at high risk of entering the youth justice system and their families.



Keep children out of court: strengthen community-based diversionary programs

Community Partnerships Innovation Grants are being offered to identify, develop, and deliver short-term and place-based responses to youth justice issues. The grants foster community-led innovations and partnerships, engaging local communities and industry in trialling new ideas that address youth offending and related issues.

Community-Based Crime Action Committees allocate funds for the delivery of crime prevention initiatives to meet specific local community needs. This police-led initiative, expanded to 12 locations, empowers local communities to provide joint action to prevent and respond to youth crime.

Restorative Justice Conferencing is a justice process to deal with offences committed by a child or young person and to divert them away from the courts. Meetings are facilitated between the young person and the victim to discuss what happened, the effects of the crime and how the harm caused can be repaired.

Townsville Community Youth Response targets high-risk repeat offenders in the Townsville area to address the drivers of offending and prevent crime from occurring. It delivers a suite of programs including High Risk Youth Court, after hours diversion service, intensive case management, cultural mentoring and bridging to education programs.

Youth Transitional Hub in Mount Isa provides out of business hours, community integrated and culturally safe diversion response for young people who are at risk of offending and entering the youth justice system.

Community Youth Response and Diversion is a multi-faceted approach made up of diversion services with afterhours support, Aboriginal and Torres Strait Islander cultural mentoring, bridging to education programs, and intensive case management for young people aged 10–15 years at high risk of offending or re-offending.

Protected Admissions and Police Cautioning ensure young offenders who admit responsibility for certain offences can be provided with diversionary options such as a caution or referral to restorative justice conferencing.



Keep children out of custody: enhance the response to young offenders at risk of re-offending

Transition to Success (T2S) aims to prevent at-risk young people from entering the criminal justice system and reduce re-offending among young people involved in the system. It is a vocational training and therapeutic service, with voluntary participation. The service builds partnerships with local community organisations to aid in delivery of the service and flexibly tailor the service to its community.

Navigate Your Health helps young people look after their health by connecting them with a Nurse Navigator to work with them and their families about their health needs.

Family-led Decision Making is designed to empower First Nations families to make positive decisions to achieve change in their children's behaviour and meet their ongoing cultural and practical support needs.

Education Justice Initiative provides Department of Education Court Liaison Officers who support young people who appear before the Children's Court to re-engage in education and training. The initiative provides specialised referral and advocacy services to ensure young people receive support to connect with education or training pathways.

Youth Co-Responder Teams are a joint response between the Queensland Police Service and the Department of Children, Youth Justice and Multicultural Affairs diverting at-risk young people, including after hours. These teams respond to young people at risk of offending behaviour, including those who are at risk of non-compliance with bail conditions. Co-responder teams work proactively with young people and their families to engage them with supports and tackle issues that may be contributing to re-offending, including non-compliance with bail conditions.

Blitz on Bail provides additional Queensland Police Service specialist prosecutors in 12 police districts to review charges, bail objections and court decisions. They appeal bail decisions where appropriate and seek diversion rather than prosecution where young people are suitable.

Bail Support Services are delivered by community organisations and assist young people at risk of being remanded in custody by providing support to ensure they meet bail conditions. Organisations provide basic needs and connect young people to housing, education, health and family support to reduce offending.

Tougher Action On Bail – intensive community bail supervision provides strengthened policing responses to serious high-risk repeat youth offenders in 10 locations. Complementing conventional bail checks, activities include referrals to early intervention programs and specialist organisations to address young people's offending behaviours, patrols of known hotspots to improve bail compliance, and targeted support for specific youth released on bail to help prevent contraventions of their conditions and keep them from returning to custody.

Conditional Bail Programs support at-risk young people to increase their ability to remain in the community while their matters are before the courts. Programs address educational and vocational needs, mental health issues, family intervention and accommodation. Programs give the court confidence that children will receive individualised and intensive supervision while they are on bail. Recent enhancements allow the program to deliver additional hours of supervision on weekends and at night for young people under a conditional bail program.

Additional Court and Legal Aid Resources ensure courts and legal aid can respond to the demands and complexity of youth justice legislation and young people appearing before the courts. Additional resources speed up bail applications, decision making and other court processes to keep children out of court and reduce the use of custody.

Legal Advocacy Services have been enhanced statewide to assist legal advocates to provide legal advice and information to young people involved in the youth justice system. They represent children, make timely applications for bail, and provide a point of expertise for local legal representatives.



Reduce re-offending: focus effort on serious repeat offenders

Integrated Case Management is a targeted intervention to address multiple factors that impact chronic juvenile offending, including problematic substance use. It also aims to enhance family and kinship connections and promotes engagement in educational and training initiatives.

Intensive Bail Initiative delivered by non-government organisations provides intensive support to high-risk young people on bail and their families and provides practical assistance to aid young people's compliance with bail.

Multi-Agency Collaborative Panels (formerly SMART) are a mechanism to provide intensive collaborative case management of young people considered to be serious repeat offenders.

Youth Offender Support Services delivered by non-government organisations provide culturally safe, client centred, evidence-based services, including intensive family support and case management. Services integrate with the local community service system building on existing service provision, and using traditional cultural methods such as connection to country and cultural activities.

On Country is a community-driven response in Cairns, Mount Isa and Townsville providing culture-based rehabilitation for young Aboriginal and Torres Strait Islanders with complex needs. Participants are provided with one-on-one support and supervision by On Country Elders and community leaders, facilitating connection with culture and country through camps, community, and engagement in education and training.

Youth Detention Centres in three sites provide secure places to detain young people to protect the safety of the community and provide consequences for offending. To stop the revolving door of youth detention, the centres address the causes of offending by partnering with agencies such as Health and Education to deliver integrated case management, therapeutic and cultural support and innovative services to find ways to help young people reintegrate and live productively in community.

Intensive Support delivers additional hours of youth justice supervision on weekends and at night for young people in the critical first 72 hours after release from youth detention.

Electronic Monitoring is being offered as an option to courts through a trial in five locations. Electronic monitoring devices (EMDs), which are GPS enabled, may be fitted to suitable young people as a component of bail conditions. The provisions are designed to protect community safety and are only imposed on repeat youth offenders charged with 'prescribed indictable offences', who would benefit from more intensive bail conditions. The EMDs are monitored by Queensland Corrective Services, with Queensland Police Service responsible for fitting and compliance, and the Department of Children, Youth Justice and Multicultural Affairs providing support and supervision to young people fitted with the devices through co-responder and intensive bail support programs.

Specialist Counselling Services are delivered by non-government providers and offer targeted responses to young people with sexual offending behaviours and support for their families. Activities include conducting forensic assessment, providing clinical treatment and preparation for Restorative Justice processes where relevant.

